



Newsletter

Term 1, Issue 1

Thursday February 6th, 2020

TERM DATES

February Wednesdays 5th, 12th, 19th, 26th, March 4th	PREPS - No Wednesdays <i>Full-Time from week beginning 10th March</i>	Tuesday, 25th	Shrove Tuesday
Friday, 7th	Beginning of School Mass - Church 9:15am	Wednesday, 26th	Ash Wednesday Mass - Church 9.15am
Friday, 14th	Road Safety Talk - Gr. P/1	March Monday, 9th	LABOUR DAY HOLIDAY
Monday, 17th & Tuesday, 18th	Prep Nurse Visit	Thursday, 13th	Assembly - 2:45pm in the Church
Monday, 17th Tuesday, 18th Wednesday, 19th	Gr's. 4/5/6 Camp to Sovereign Hill	Monday, 23rd	School Photos
Friday, 21st	Long Distance Running Clinics - <i>students to wear sports uniform</i> P-1 Road Safety Incursion - 9:30am	Friday, 27th	Last Day of Term 1 - 2:30pm finish <i>(Buses will run to this earlier finish time)</i>



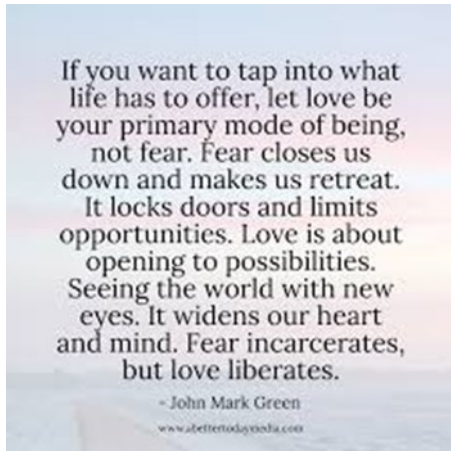
We acknowledge and respect the past and present Elders, the Aboriginal and Torres Strait Islander people and custodians of this land the Dja Dja Wurrung people. Thank you for protecting and preserving our land Australia in the past, for sharing it now and educating us for the future.

We pay our respects to the Elders of the past, present and future and acknowledge their spiritual connection to Country.

Monday morning prayer is in the Dhelkunya Dja Building this Term.

Our School Vision

We are an empowered and sustainable learning community, centred in faith and united in our respect and responsibility for all of creation; we strive for excellence; actively living, learning, caring and growing together.



May we use well the talents we have been given. Help us bring them to our studies so that we work to the best of our ability. May all in this school feel valued, for who they are. May all we do and learn be in the service of love, both now and in the future.

We ask this in the name of Jesus our Lord.

Dear families and friends,

Welcome back to St. Mary's! I hope that you have enjoyed a revitalising summer break with your families and have started the school year on a positive note. As a staff we are feeling fresh and highly motivated about providing a rich educational environment for your children.

Indeed, the vocation of a teacher requires much energy, liveliness, passion and dedication. His or her enthusiasm ignites that spark of excitement that opens receiving minds to wider fields of knowledge. Teachers need to be prepared to work hard, together as a team with the interests of their students at the fore-front. This is how it should be.

Much time, thought, research and careful planning in collaboration with each other needs to happen behind the scenes to deliver a richly diverse and student centred curriculum.

On Tuesday January 28th our staff met to set our goals for the year according to the 5 areas of school improvement. We used Jesus as our role model and further explored our beliefs and vision following the inspiration, "I dream a school...where to next?" in order to clarify what it is that we are offering our children here at St. Mary's, what we hold fundamental to their growth and to re-awaken our shared vision to deepen and develop shared and consistent understandings in how we work and relate with your children.

In 2020 the staff of St. Mary's will continue to develop their capacity to meet the varied needs of their students. We want St. Mary's to be school where teaching methods vary from the use of contemporary technologies like robotics to out-of-class experiences. Those experiences are important because they do not confine students to the four walls of a classroom. There would also be integrated learning of subjects both in the Arts and Sciences so that the education received would not be about confining but expanding. Given choices, students get a sense of freedom, can express opinions and will be more sociable. All these make them better persons in society, possessing a wide range of skills.

At St. Mary's we promote a culture of working together and across all ages. This is what is so special about our school. We also welcome the input of mums, dads, siblings, grandparents, friends, local community and extended family who all provide opportunity for our children to truly experience working as a multi-age community for a common purpose.

The active involvement of senior community members also enriches children's lives. This provides another means for the wisdom of the 'elders' to be passed on to future generations.

We have been working on improving our learning environment so that it is an appealing and nurturing place to be. We have further developed outdoor learning areas to include an interactive garden and play area as well as an outdoor classroom. We are also working on making our indoor learning spaces more flexible and inviting. Our renovated learning spaces will provide the flexibility needed to modify the classroom to support needs and purpose.

We hope that each day our children discover something new & deeper about themselves. We also hope that they can see themselves as life-long learners and feel that school is a place where their curiosity is aroused. We encourage our young people to be active in their learning and to question and look for different ways to find solutions. We support them to work hard, to work through challenges and persist to improve themselves. Overall we hope that St. Mary's is a happy & nurturing place and that our students enjoy coming to school.

Nelson Mandela once said, "Education is the great engine of development. It is through education that the daughter of a peasant can become a doctor, that the son of a mineworker can become the head of the mine, that the child of farm workers can become the president of a great nation". Education can bring a change in someone's future as Mr. Mandela observed. The struggle to keep fulfilling that observation must be made by us. Students need to be inspired, amazed and be aware of endless opportunities.

We feel privileged to be working with you and all of our students and we are eager to further develop the potential of your precious children.

There is a positive vibe humming through the school and our children have settled well into the routines of their 2020 classrooms. As we come to the end of our first full week back, we have a lot to look forward to in 2020. This year promises much for everyone in our community. For those beginning their journey with us, we wish you fulfilment and success. To those of you who are returning to St. Mary's for another year, may your time continue to find each day an enriching experience.



"Whoever welcomes this child in my name, welcomes me; and whoever welcomes me, also welcomes the one who sent me." Lk 9:48

It is our pleasure to introduce our new students (along with their families):

Prep:

Scarlett BOYD
Livinia DIMOPOULOS
Hannah ENGEL
Annabelle LEWIS
Emily LUCAS
Indiana MORELLI
Kairvi RAVALA
Frances RENICK MC CARTHY
Liana SALVATORE

Serena
Robyn & Christos
Rebecca & David
Fiona & Nick
Angela & Paul
Donna & Ian
Harpuneet, Taj
Maureen & Tim
Kathy & Rob



Scarlett THOMPSON
Kaira TOBIN
Soleil HOLT
Alastair LANE
George NEO
Noah WARDLEY
Mitchell VIDLER

Tara & Charlie
Esther & David
Darren & Stacey
Chris & Fiona
Connie & Beng
Tabitha & Matthew
Emma & Leigh

YEAR 1

Gabriel GILFORD-DROUIN
Chase Kakos

Sally
Brittani

YEAR 2

Senna FEATHERSTONE

Bronwyn & Daniel

YEAR 4

Daisy GILFORD-DROUIN
Anuwa FEATHERSTONE

Sally
Bronwyn & Daniel

YEAR 6

Naomi CRUM
Hannah OPPERMAN

Esther
Kara & Chris



We are delighted to have so many new people join us this year. It is our hope that they feel the welcome and warmth of our community and enjoy their time at St. Mary's.



Beginning of the school year Mass – You are all Welcome!

We encourage you all to take part in our first whole school Mass for this year where we will set the intention and pray for many blessings for 2020. Mass will begin at 9.15am tomorrow, Friday, 7th in St Mary's Church.

Drop Off & Pick Up

In the interests of the safety of all we need to adjust our drop off and pick up points. With our increased numbers and the pending renovation there is less parking space along Templeton Street. We ask that if you are picking up or dropping off your child/ren that you park in [Lyttleton Steet and bring your children through the back gate.](#) A teacher will be on duty from 8.30 am and again at 3.15 pm. The back gate will be opened for morning drop off and afternoon pick up. If you decide to park in Templeton St. we ask that you walk through the yard towards the back gate to pick up your child/ren. There are also parking options in Campbell St. which runs parallel to Templeton St. You can then walk down Randall Road (the dirt track opposite the front door) that leads to the front of our school. We will see how this goes and if needed we will adjust these arrangements as necessary. When construction starts the area outside the classrooms will be closed off so we will reassess these procedures then. We will begin this routine on this **Monday 10th February.**

We ask that you take great care when parking and backing out of parking spaces as well as when you are looking for a parking space. Some have been reversing back to parking spaces when children are crossing the road. This is dangerous.

Many thanks for your co-operation and understanding.

Late Arrivals

For security purposes our external doors are locked from the outside when children are in their classrooms. If you arrive after the bell we ask that you bring your child into the front office to sign them in. We will then take them to their classroom.

Staff structures and teachers for 2020

No doubt you have caught up with your children's teachers and most of you have met Danielle and Paul who are settling in very well.

Prep - One (25 students): Ms. Danielle Crane Mon-Thurs & Mrs. Watts Friday morning then specialist classes with Mrs. Byrne Fri Afternoon.

Mrs. Watts will work across the Prep-Year 3 classes over 4 days each week. She will also plan with and mentor our junior school staff.

Year Two-Three (22 students): Mrs. Karen White full time

Year Four-Five (22 students): Mrs. Alison Condliffe Wednesdays off until March 10th then full time. Mr. Bernard Kerrins will take the class on Wednesdays until March 10th.

Year Six (18 students): Mr. Paul Johns Mon-Thurs and Mr. O'Sullivan on Fridays.

LSO : Mr. Rob Wolff Prep -Year 3

LSO : Mrs. Barb Burchett Year 4-6

These are exciting times for St. Mary's. Change brings new opportunity and we know you will join us in warmly welcoming our new teachers into our vibrant school community. Together at St. Marys we will continue to support our students throughout their transition period developing specific skills that:

- develop new friendships and improve self-esteem and confidence.
- assist them in their new school life, so that there are few concerns for parents
- promote an increasing interest in school and school work
- allow them to get used to new routines and school organisation
- allow them to experience curriculum continuity.

Teaching Positions of Leadership 2020

Bronwyn Phillips: Principal & Learning Diversity Leader (Term 1)

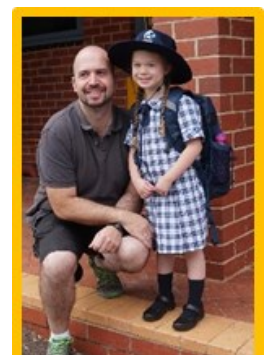
Mrs. Watts: Second in Charge & Literacy Leader

Karen White: Religious Education, Numeracy & ICT Leader

Alison Condliffe: Inquiry Leader

Nicole Byrne: Leader of the Arts & Languages

Mark O'Sullivan: Physical Education & Wellbeing Leader



Uniform & Footwear

Our students are now required to wear the full updated school uniform. Our school uniform is detailed on our website and in our school handbook. All uniform items are available to be purchased at Hip Pocket in Johnson St. Most items are in stock except for the school bags which are on order. Black footwear is part of our school uniform. If your child would like to wear runners every day they need to be **all black**. Given the phase in stage of the new uniform has now finished, if your child wishes to wear coloured runners for PE lessons they may bring them in their school bag and change into them for their lesson then change back into their black footwear for the rest of the day. All **socks** and **headwear** should be **navy** blue. Thank you for your co-operation in supporting our schools uniform policy.

Year 4-6 Sovereign Hill Camp Payment

Our year 4-6 students will attend our history camp at Sovereign Hill this February from Monday 17th until Wednesday 19th. Details have been sent out. Mrs. Condliffe, Mr. Johns, Mrs. Burchett and myself will be attending. We need to pay for this activity before the children take part therefore we require camp fees to be paid in full prior to your child attending the camp. As advised last year, the cost for the camp will be **\$350.00 per student**. If you are experiencing financial difficulty, please phone me. We are all very much looking forward to our camp. Thank you to Karen White for organising this experience for our children.

Numeracy & Literacy Testing Interviews Your child's teachers enjoyed learning more about your children and they gained valuable information about their learning needs throughout the numeracy and literacy testing sessions. These times also created an opportunity for your child and their teacher to develop and build on relationship which is pivotal to learning.

Raw Food Snack

Your children may snack on **raw** fruits and vegetables at 10.00am each day if they feel hungry.

This encourages healthy eating and it keeps their brains powered! Playlunch and lunch is eaten inside before outdoor play. You can send in sandwiches, crackers etc for playlunch and lunch. We are a nude food school therefore ask that as much as possible that food is stored in lunchboxes or reusable containers to reduce our ecological footprint.

Prep Health Nurse Visits

Nurse Trina will be doing health checks for our Prep children on Feb 17th and 18th. Forms have been sent home to Prep parents. We ask that you send them back before these dates.

Mercy Building Upgrade

At this stage our project is still expected to begin in mid to late February. We will keep you informed about this project.



Missing Clothing

Please check our lost property basket (now in the front foyer) if you are missing uniform. If you have uniform items at home that do not belong to you can you return them. Please ensure your child's uniform items are clearly labelled. Thank you.



Potato Harvest

There was great excitement yesterday as our children discovered their potatoes in the soil!

The prep-one children were so proud of their harvest and can tell you how many potatoes they found. They are now working out what we will do with them!



Bush Fire Safety

I ask you to make sure that you understand our school's procedures on Code Red days. In the event of a day being declared a code red day St. Mary's School will be closed. We are aware that some children may live or be in different zones and we ask that you execute your own bushfire preparedness plan as necessary and if you deem it unsafe to send your child to school on non-code red days that you let us know that your child will be absent. Please see our Bushfire Management Policy for further information.

Bushfires.

It was with a heavy heart that we watched the bushfire crisis unfold across our country over summer. We stand with all affected people and communities and offer our sympathies and support in this difficult period. After a sombre start to the new year, we are now looking to the future. It was wonderful to see the outpouring of compassion and financial aid from all Australians. If you wish to support people affected by these fires through the St Vincent de Paul Society Victoria, below you will also find information about the St Vincent de Paul Society's role in responding to our communities and a link to some Frequently Asked Questions about how we are supporting Victorians affected by the bushfires.

The St Vincent de Paul Society (Vinnies) has set up a 'Bushfire Appeal' and people can make tax deductible donations via their website www.vinnies.org.au.

Vinnies is on the ground helping people as they deal with the immediate aftermaths of fires, and will continue to be there as communities recover and build.

Donations go toward providing food, clothing, essential items and grocery vouchers for those who have lost everything.

In response to the widespread devastation, the Australian Catholic Bishops Conference is coordinating a national response.



FIRE DANGER RATING
Category
CATASTROPHIC (CODE RED)
EXTREME
SEVERE
VERY HIGH
HIGH
LOW – MODERATE

The response includes facilitating a national network to connect those affected by the bushfires with people who can help with tasks such as preparing meals, clearing properties, rebuilding communities, as well as providing pastoral and counselling support.

Key national agencies such as Catholic Health Australia, Catholic Social Services Australia, the National Catholic Education Commission and Vinnies are all collaborating to ensure as effective a response as possible from the wider Catholic community.

Working together, we can make a real difference in helping these communities recover.

Interactive Play Area: More sturdy sticks needed!

Thank you for your donations towards this area. Your children are immersing themselves in the construction of huts and they are very much enjoying the additional sticks and rocks. We could use further 1.5 to 3 metre length sticks if you have any. Thank you very much.



School Fees in 2020

We keep fees to a minimum and have only increased them by \$35.00 in 2020 as outlined below. *From now on your statement of fees will be emailed to you.* Should you require a hard copy please ask Karen at the office.

Family fee:	\$1,250.00	per family (an increase of \$25.00)
Curriculum Levy:	\$300.00	per child
Capital levy:	\$175.00	per family (an increase of \$10.00)
Excursion Levy:	\$100.00	per child



School Holiday Watering Roster

We have started the year with our garden thriving thanks to all who were able to come in and water over the holiday period. Special thanks to Barb Burchett, Therese & Phil Watts and to the following families:

The Freemans
The Kelly-Vances
The Graingers
The Cheesmans
The Lewis's
The Robinson-Singh's
The McQualter's
The Lenan/Healy's



Parents & Friends

Our P&F committee meet regularly with the purpose of supporting our school as well as for connecting socially with each other. We encourage you to attend meetings or take part when you can. Our next meeting is next [Wednesday February 12th at 9.15 am](#) in the staffroom. This is our AGM. We would be delighted to see you there if. Kari Aldridge has done a fantastic job as our president over the past few years. She has other commitments this year so we are looking for interested people to fill this role which can be shared.

President

The President's position carries a task of trust and responsibility.

The main role of the President is to:

- Be the main representative/spokesperson for the PFA.
- Chair the meetings.
- Liaise with the Committee members and set the agenda for meetings.
- Be the main contact for agenda items.
- Open the meetings punctually and ensure the agenda is followed.
- Ensure those present at the meeting have the opportunity to discuss each item on the agenda prior to a decision being made.
- Make sure, particularly on contentious matters, as many points of view as possible are expressed. Make sure everyone is given an opportunity to speak and encourage members to speak by addressing questions to them.
- Work towards a collaborative approach with other members of school community.
- Be mindful of timelines, keep discussions on track and keep meetings moving.

Treasurer

The Treasurer carries a task of trust and responsibility.

- Duties and responsibilities include:
- Taking charge of monies of the PFA.
- Keeping accurate financial records of all receipts and expenditure.
- Banking all money regularly Reporting regularly on the PFA's financial position at meetings.
- Preparing a financial report for the Annual General Meeting if necessary.

Committee Members

Committee members have a responsibility to:

- Attend PFA meetings as regularly as possible and send apologies if unable to attend.
- Help organise PFA activities and projects.
- Work towards the best possible outcomes being achieved.
- Be mindful that discussions should be on topics which are relevant to the whole school community.
- Facilitate and nurture positive home/school relationships within the parent community.

PSAC

Our next Parish School Advisory Council (School Board) Meeting is on Wednesday March 25th at 7.00pm in the staffroom. Further details will be provided in next week's newsletter.

Cyber Safety

For your information we have included a cyber-safety information sheet later in this newsletter along with some relevant webinar options which may be of benefit to you.

Simon Harvest School Psychologist

Simon is now taking referrals for this term and we encourage any of you who you feel your child could benefit from Simon's expertise and experience to pick up a form from our office. You can receive 8 funded visits for your child. Simon has limited spaces so be sure to let us know if you would like to use this valuable service.

Coronavirus

The recommendation is that parents/guardians/carers should ensure that any student returning from mainland China (not including Hong Kong, Macau and Taiwan) who was in mainland China on or after 1 February 2020 is isolated at home and should not attend school until 14 days after they were last in mainland China.

This recommendation **does not** apply retrospectively. It applies only to students who were in mainland China on or after 1 February 2020.

The existing advice remains that parents/guardians/carers of students should ensure that any student is isolated at home and should not attend school for 14 days:

- following exposure to any confirmed novel coronavirus case; or
- after leaving Hubei Province.

This same advice applies to any impacted staff.

The [Victorian Government's latest factsheet](#) about the coronavirus is included with this newsletter.

This new advice is based on the latest expert recommendations of the Commonwealth's Chief Medical Officer and Victoria's Chief Health Officer.



Thank you for your well wishes following my recent announcement and for your continued support to ensure the health and wellbeing of our school community.

Kind regards,

Bronwyn Phillips
Principal



*"If a child can't learn the way
we teach, maybe we should
teach the way they learn."*

Ignacio Estrada

Inspiring you to inspire them... www.tes.co.uk

First Day of School 2020 ...







St. Mary's Parents and Friends Association



I hereby nominate
..... for the position of

<i>please circle appropriate nomination position:</i>	
President:	Vice President:
Secretary:	Assistant Secretary:
Treasurer:	Assistant Treasurer:

Signed

Seconded by

I accept the
above nomination for the position of

Date:



Newsletter article: Bushfire At-Risk Register - Schools

School procedures for the bushfire season

Fire danger ratings and warnings are used in Victoria to provide clear direction on the safest options for preserving life.

Schools and children's services listed on the DET Bushfire At-Risk Register (BARR) will be closed when a Code Red fire danger rating day is determined in their Bureau of Meteorology district. **Our school has been identified as being one of those at high bushfire risk and is listed on the BARR.**



Where possible, we will provide you with up to four days' notice of a potential Code Red day closure by letter and SMS Flexibuzz. A Code Red day will be determined by the Emergency Management Commissioner no later than 1.00 pm the day before the potential closure. Once we are advised of the confirmation of the Code Red day we will provide you with advice before the end of the school day.

Once confirmed, the decision to close will not change, regardless of improvements in the weather forecast. This is to avoid confusion and help your family plan alternative care arrangements for your child. It is also important to note that:

- No staff will be on site on days where the school is closed due to a forecast Code Red day.
- Out-of-school-hours care will also be cancelled on these days
- School camps will be cancelled if a Code Red fire danger rating day is determined for the Bureau of Meteorology district in which the camp is located.
- Depending on which Bureau of Meteorology district is impacted bus route cancellations may affect our school.

On these Code Red days families are encouraged to enact their Bushfire Survival Plan – **on such days children should never be left at home or in the care of older children.**

For those of us living in a bushfire prone area, the CFA advise that when Code Red days are forecast, the safest option is to leave the night before or early on the morning of the Code Red day.

As part of preparing our school for potential hazards such as fire, we have updated and completed our Emergency Management Plan, [reprioritised any maintenance works that may assist in preparing for the threat of fire and cleared our facility's grounds and gutters]

What can parents do?

- Make sure your family's bushfire survival plan is up-to-date and includes alternative care arrangements in the event that our school is closed.
- Ensure we have your current contact details, including your mobile phone numbers. Keep in touch with us by reading our newsletters, [by checking our website www.smcastlemaine.com and by talking to your child's teacher or any other member of the teaching staff about our emergency management plan.
- Most importantly at this time of year, if you're planning a holiday or short stay in the bush or in a coastal area, you should check warnings in advance of travel and remain vigilant during your stay.
- If your child is old enough, talk to them about bushfires and your family's bushfire survival plan.
- You can access more information about children's services closures on the Department of Education and Training website – see <http://www.education.vic.gov.au/about/programs/health/pages/closures.aspx>

For up-to-date information on this year's fire season, visit the CFA website at www.cfa.vic.gov.au or call the 24-hour Victorian Bushfires Information Line on 1800 240 667.



TO UPDATE FLEXIBUZZ - *All parents*

To ensure you stay up-to-date with what's happening at the school, please ensure you are subscribed to our school through FlexiBuzz and are connected to the correct boxes for 2020.

For our new parents:

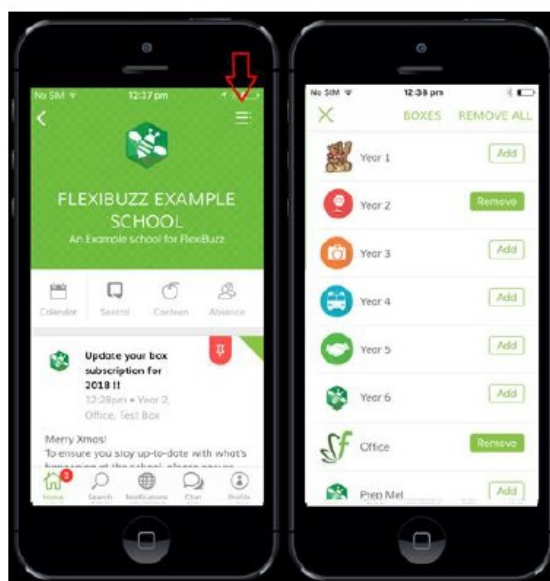


Just a reminder to select your 'child's class' and 'parents' boxes

For our existing parents:

To update your box subscriptions, enter our FlexiBuzz site and select the menu icon in the top right.

From here you can remove and add your box subscription preferences.



For further information or assistance please visit the FlexiBuzz website www.flexibuzz.com.au or email support@flexibuzz.com.



CareMonkey is a platform for automating consent forms, medical forms, field trips, staff forms, incident reporting and group messaging and is used by staff to access secure emergency information offsite when they are attending camps, excursions, etc.

Parents can instantly update their child's medical and contact information.

Parents are reminded to keep their child's CareMonkey information up to date; so if any of your child's medical or emergency information may have changed could you please log into CareMonkey and update. Many thanks.

SCHOOL NURSE ASSESSMENTS

**MONDAY, 17TH FEBRUARY &
TUESDAY, 18TH FEBRUARY**

All Prep students are eligible for a Health Assessment and envelopes have been sent out to the families.

*Could these please be returned to the school by
Thursday, 13th February.*

If there are parents/carers who have any concerns regarding older children within the school, they too can be seen by the School Nurse.

Possible examples may be:

- vision/colour vision
- hearing
- speech
- soiling/wetting
- behaviour
- nutrition/weight
- fine motor skills
- gross motor skills
- dental health

**IGNITE
MINDS**



Before and
After School Care
at St. Mary's
Primary School

7:00am - 9:00am
3:00pm - 6:00pm

Phone:
1300 856463
for
further enquiries.

**Start the chat before
someone else does**



Start the chat about online safety and help make every day a Safer Internet Day!

Join in the Safer Internet Day buzz

This year Safer Internet Day will be celebrated on Tuesday, 11 February 2020. The theme is 'Together for a better internet' and Australia's eSafety Commissioner is encouraging parents to mark the day by starting family conversations about online safety.

You can download our Safer Internet Day resources at esafety.gov.au/sid and use them to start the chat about online safety with your family.

Explore Australia's online safety hub

Check out eSafety's great range of advice and resources. Get started by visiting our **parents and carers** pages and reading the practical tips for kicking off an online safety conversation. You can also download our **'Parents guide to online safety'** booklet (available in 5 languages), look through eSafety Kids with your family or get familiar with our **step by step** advice for reporting different types of online abuse. **Find out more at esafety.gov.au**

Join our free parent webinar

The session will cover how to start the chat about harmful content, contact with strangers and cyberbullying.

Helping Kids Thrive Online

12th February 2020 at 8:00 PM (AEDT) 14th February at 2020 12:00 PM (AEDT) **Register now at esafety.gov.au/parents/webinars**



eSafety Commissioner

esafety.gov.au/sid



CAMPS, SPORTS AND EXCURSIONS FUND (CSEF) APPLICATION FORM

School Name

School REF ID

Parent/legal guardian details

Surname

First name

Address

Town/suburb State Postcode

Contact number

Centrelink pensioner concession **OR** Health care card number (CRN)

- - - **OR**

☐ Foster parent* **OR** ☐ Veterans affairs pensioner (Gold Card)**

*Foster Parents must provide a copy of the temporary care order letter from the Department of Health and Human Services (DHHS).

**Applicants must provide a copy of the Veteran Affairs Gold card

Student details

Child's surname	Child's first name	Student ID	Date of birth (dd/mm/yyyy)	Year level

I authorise the Department of Education and Training (DET) to use Centrelink Confirmation eServices to perform an enquiry of my Centrelink customer details and concession card status in order to enable the business to determine if I qualify for a concession, rebate or service. I also authorise the Australian Government Department of Human Services (DHS) to provide the results of that enquiry to DET.

I understand that:

- DHS will use information I have provided to DET to confirm my eligibility for the Camps, Sports and Excursions Fund and will disclose to DET personal information including my name, address, payment and concession card type and status.
- this consent, once signed, remains valid while my child is enrolled at a registered Victorian school unless I withdraw it by contacting the school.
- I can obtain proof of my circumstances/details from DHS and provide it to DET so that my eligibility for the Camps, Sports and Excursions Fund can be determined.
- If I withdraw my consent or do not alternatively provide proof of my circumstances/details, I may not be eligible for the Camps, Sports and Excursions Fund provided by DET.
- Information regarding my eligibility for the Camps, Sports and Excursions Fund may be disclosed to the Victorian Department of Health and Human Services and/or State Schools Relief for the purpose of evaluating concession card services or confirming eligibility for assistance.

You are able to request access to the personal information that we hold about you, and to request that any errors be corrected, by contacting your child's school.

Signature of applicant

Date / /

CSEF ELIGIBILITY

Below is the criteria used to determine a student's eligibility for the Camps, Sports and Excursions Fund (CSEF).

Criteria 1 – Eligibility

To be eligible* for the fund, a parent or legal guardian of a student attending a registered Government or non-government Victorian primary or secondary school must:

- on the first day of Term one, or;
 - on the first day of Term two.
- a) Be an eligible beneficiary within the meaning of the State Concessions Act 2004, that is, be a holder of Veterans Affairs Gold Card or be an eligible Centrelink Health Care Card (HCC) or Pensioner Concession Card (PCC) holder, OR
- b) Be a temporary foster parent, and;
- c) Submit an application to the school by the due date.

* A special consideration eligibility category also exists. For more information, see:

www.education.vic.gov.au/about/programs/Pages/csef.aspx

Parents who receive a Carer Allowance on behalf of a child, or any other benefit or allowance not income tested by Centrelink, are not eligible for the CSEF unless they also comply with one of (a) or (b) above.

Criteria 2 - Be of school age and attend school in Victoria

School is compulsory for all Victorian children aged between six and 17 years of age inclusive.

For the purposes of CSEF, students may be eligible for assistance if they attend a Victorian registered primary or secondary school. Typically, these students are aged between five and 18 years inclusive.

CSEF is not payable to students attending pre-school, kindergarten, home schooled, or TAFE.

Eligibility Date

For concession card holders CSEF eligibility will be subject to the parent/legal guardian's concession card being successfully validated with Centrelink on the first day of either term one (28 January 2020) or term two (14 April 2020).

PAYMENT AMOUNTS

CSEF payment amount

The CSEF is an annual payment to the school to be used towards camps, sports and/or excursion expenses for the benefit of the eligible student.

- Primary school student rate: \$125 per year.
- Secondary school student rate: \$225 per year.

The CSEF is paid directly to your child's school and will be allocated by the school towards camps, sports and/or excursion costs for your child.

For ungraded students, the rate payable is determined by the student's date of birth. For more information, see:

www.education.vic.gov.au/about/programs/Pages/csef.aspx

Year 7 government school students who are CSEF recipients are also eligible for a uniform voucher. Secondary schools are required to make applications on behalf of parents so please register your interest at the school.

HOW TO COMPLETE THE APPLICATION FORM

NOTE: ALL SECTIONS MUST BE COMPLETED BY PARENT/LEGAL GUARDIAN

1. Complete the PARENT/LEGAL GUARDIAN DETAILS section.
Make sure that the Surname, First Name, and Customer Reference Number (CRN) details match those on your concession card. You will also need to provide your concession card to the school.
If you are claiming as a Foster Parent or a Veteran Affairs Pensioner, you will need to provide a copy of documentation confirming your status as a temporary Foster Parent or provide your Veterans Affairs Pensioner Gold card to the school.
2. Complete the STUDENT/S DETAILS section for students at this school.
3. Sign and date the form and return it to the school office as soon as possible. The CSEF program for 2020 closes on 26 June, 2020.

CSEF payments cannot be claimed retrospectively for prior years.

Queries relating to CSEF eligibility and payments should be directed to the school.

Emergency Management Plan Appendix:

BUSH FIRE MANAGEMENT: From October - March

St. Mary's Castlemaine, is in the North Central CFA Zone and is no longer identified as being of high fire risk therefore is not listed on the Department's Victoria Wide Bushfire At-Risk Register & CECV's High Risk Register.

1. Responding to an extreme fire danger warning:

St. Mary's Castlemaine will not close on an extreme fire danger warning day. The school will ensure that on such days the following is enacted:

- that staff and students are properly hydrated and use sun protection.
- if deemed necessary children will be kept indoors during recess and lunch times.
- staff will monitor the CFA website and media services for any actual bushfire activity.
- staff will be prepared to enact the school's emergency management plan if needed.

If the school has offsite activities planned or in place (including camps and excursions) located in a Bureau of Meteorology district affected by a declaration of Extreme fire danger, these may need to be cancelled, rescheduled or recalled. The decision to cancel, reschedule or recall resides with the school. If the offsite activity affected by an extreme fire danger warning has not been cancelled, rescheduled or recalled, staff in charge at the offsite activity will do the following:

- monitor all relevant websites.
- consult with local emergency services.
- examine what transport options are available or required if relocation is necessary.
- be prepared to enact the site's EMP.
- stay in contact with the Principal.

Details of all offsite activities, will be entered in the Catholic Education Commission of Victoria Ltd (CECV), online Student Activity Locator (SAL), during the offsite activity

How will I be advised of a Code Red closure?

- Where possible, the forecasting of a Code Red day will provide up to 4 days notice of a planned closure (including warnings about cancelling, changing, rescheduling or recalling off-site activities, such as camps and excursions), as well as information about cancellations of school bus routes.
- You will be advised by email or letter sent home from school, as well as by Flexibuzz – you can also check for updates at:
<http://www.cecv.catholic.edu.au>
<http://www.education.vic.gov.au/about/programs/health/pages/closures.aspx>
- You should expect that, in some instances, fewer than 4 days notice may be given.
- The final decision to close will be confirmed no later than 1.00 pm the day before the potential closure by the Emergency Management Commissioner.
- Once the decision to close is made, this will not change – regardless of changes in weather forecast – this will help limit confusion and provide time for you to make alternative care arrangements for your children.

Closure – other than planned

- While every effort is made to anticipate fire threats, our school may be threatened by an unpredicted outbreak of a fire or a known fire may unexpectedly change its course.
- When this occurs, our Emergency Management Plan will ensure that we respond to the threat in a planned, timely and appropriate manner.
- We have developed our Emergency Management Plan **in consultation with local emergency services and local government authorities.**
- Closure updates, including advice on re-opening is available from the Department's website:

<http://www.cecv.catholic.edu.au>

and/or

<http://www.education.vic.gov.au/about/programs/health/pages/closures.aspx>

planning phase. Details should be reviewed prior to the offsite activity and in the event of cancellation removed from the database.

Code Red Day:

In the event of a Code Red Day, St. Mary's Castlemaine **will close**.

Planned Code Red day closure of schools



Schools including outside-school-hours-care services listed on the Bushfire At Risk Register (BARR) will be closed on days when the Fire Danger Rating is determined by the Emergency Management Commissioner as being **Code Red**.

All bus routes co-ordinated by schools on the BARR will also be cancelled. Whilst we are no longer on the BARR, upon advice from CEM, we will follow suit of our neighbouring schools who are and close on CODE RED days.

In regard to an offsite activity, St. Mary's Castlemaine will:

- ensure that for any offsite activity that cannot be recalled because it is not safe to do so, the teacher in charge is prepared to enact the relevant emergency management plan in the event of a direct threat of fire.
- ensure that all other offsite activities in weather districts affected by the Code Red fire danger day have been cancelled, re scheduled, relocated or recalled.
- ensure that details of the offsite activity entered in the SAL have been reviewed, updated or in the case of cancellation, removed.

Bushfire Preparedness Checklist:

St. Mary's Castlemaine is aware that being prepared for bushfires is necessary for all schools, not just those in a rural setting and/or those on the Bushfire at Risk Register. Metropolitan schools may be at risk from site factors (e.g. located in a leafy area) or because their students attend offsite activities in bushfire prone areas.

St. Mary's Castlemaine completes a bush fire preparedness checklist during high fire danger times.

References:

Adapted from CECV – Catholic Schools Emergency Management Manual (Revised) 2017.
Adapted from CECV - Extreme Fire Danger Warning: Schools Guidance December 2017.
Adapted from CECV – Code Red Fire Danger Warning: Schools Guidance December 2017.

Reviewed by staff & PSAC & Updated 28th November, 2019 Bronwyn Phillips

IMPORTANT NOTICE

Minimising the spread of Coronavirus in schools

RECENT CONCERNS about the spread of viruses in close populations, such as schools, have highlighted the importance of training staff and students in proper hand hygiene measures. Such training will decrease the school's exposure to fast spreading viral and bacterial diseases.

School training should focus on:

- Overcoming complacency in hand washing and hand sanitising techniques
- Teaching the important "moments" for hand hygiene
- Teaching effective hand washing techniques.

Overcoming complacency a key factor in preventing disease transfer

The biggest hurdle in hand washing training is overcoming the attitude of "I already know how to wash my hands".

It is important to dispel this attitude before proper techniques can be taught.

Products like **GlitterBug Potion** are useful to show trainees that their current techniques are inadequate. The product is an engaging and memorable visual demonstration that uses UV light to show all the areas missed by ineffective hand washing.

The important "moments" in school hand hygiene

Medical professionals refer to the crucial times where hand hygiene is important as **moments** - before touching a patient, before surgery, after exposure to fluids, etc.

In schools, there is an equivalent set of moments that staff and students should recognise.

- At the start of the day
- Before eating
- After toilet
- After contact with sick people
- After messy activities, etc

Who can benefit from hygiene training?

- | | |
|------------------|------------------|
| • Teachers | • Staff |
| • Students | • Canteen staff |
| • Parent helpers | • Teachers aides |

Giving staff and students the tools to protect themselves from disease is something that will benefit them for life. It will also have positive benefits for the school with fewer staff and student absences due to illness.

Training costs

A single 240ml bottle of **GlitterBug Potion** can be used to train between 150 and 200 students and costs \$50+GST, so the **cost per student is around 30¢**.

The special GlitterBug UV torches are also \$50+GST. It is a good idea for the school to own a few of these to make the demonstration go faster. Bulk packs and discounts are available.

Purchasing

Orders can be made online at

www.glitterbug.com.au

Alternatively, purchase orders can be sent to **sales@glitterbug.com.au**.

Do you have a current Health Care Card?

If so, you can access Saver Plus, where your savings are matched dollar for dollar up to \$500 for your child's education.

Flyers available from the school office.

\$500 towards you
or your children's
education



Join Saver Plus.
Free financial education and your savings
matched dollar for dollar, up to \$500.

saverplus.org.au
1300 610 355



Saver Plus is a free financial education
program that matches your savings,
dollar for dollar, up to \$500.

What can the \$500 be used for?

- | | |
|--|--|
|  laptops & tablets |  lessons & activities |
|  uniforms & shoes |  books & supplies |
|  vocational education |  camps & excursions |

Can I join?

To join Saver Plus, you must meet all of the below criteria:

- Be 18 years or over
- Have a child at school or attend vocational education yourself
- Have regular income from paid employment (you or your partner)
- Have a current Health Care or Pensioner Concession Card
- Be in receipt of an eligible Commonwealth social security benefit, allowance or payment*

To find out more:

Enquire online at saverplus.org.au

Email saverplus@bsl.org.au

Call or SMS your name and postcode to
1300 610 355

Like us on Facebook 



Or contact the nearest office for your area:

1300 610 355 or MaryboroughSP@bsl.org.au

* many Centrelink payments are eligible, please contact your local Coordinator for more information.

Saver Plus is an initiative of the Brotherhood of St Laurence and ANZ, delivered in partnership with Berty Street, The Benevolent Society and The Smith Family and other local community agencies. The program is funded by ANZ and the Australian Government Department of Social Services. Go to www.ds.gov.au for more information.

© 2014 National Institute on Disability and Rehabilitation Research. All rights reserved. This document is a U.S. Government work and, as such, is in the public domain in the United States of America.

EXCELLENCE • ARTISTRY • PASSION



TREVOR JARRETT
CASTLEMAINE
DENTAL

Now welcoming new patients!



"Dr Trevor Jarrett is an amazing dentist who will not only ensure you feel comfortable but also make your teeth sparkle! I've never felt more comfortable with a dentist before. Thanks Trev!"

- Janine.

Child Dental Benefits Schedule

Is your child aged between 2-17?
They may be eligible for free dental work.
Give us a call and we can check your eligibility!






Appointments now available

5407 0207

11 Urquhart Street, Castlemaine

www.castlemainedental.com.au

Hosting an exchange student can be a truly rewarding experience for the whole family

Welcome a new family member into your home

HOST FAMILIES NEEDED 2020

- ✓ Experience a foreign culture firsthand
- ✓ Be exposed to a new language at home
- ✓ Rediscover and share the beauty of Australia
- ✓ Develop friendships that last a lifetime

We have a wonderful group of students arriving in May, July and August 2020 for 3, 5 or 10 months and are excitedly waiting to hear news of their host family in Australia.

All students have a wide range of interests and hobbies.

If your family can offer a friendly, supportive and caring home environment, contact us today
1300 135 331 or info@studentexchange.org.au
www.studentexchange.org.au/hosting
[experienceiseverything](http://www.studentexchange.org.au/hosting)







Child Dental Benefits Schedule

Is your child aged between 2-17?
They maybe eligible for free dental work.
Give us a call and we can check your eligibility!



Australian Government
Department of Human Services



medicare



TREVOR JARRETT
CASTLEMAINE
DENTAL

5407 0207
11 Urquhart Street, Castlemaine

www.castlemainedental.com.au

Yoga. Reiki. Dance.

FIRE RECOVERY FUNDRAISER

Sunday 9th Feb

The Mill - EmBODY studio
Castlemaine

Enquiries: text Suzi van
Dorenmalen 0418374640

10am-11.30am	YOGA with Jane	\$22
1pm-3pm	REIKI with Suzi, Carlyn, Esther, Taryn	
	25 mins sessions	\$33
4pm-5pm	Water Flow Hoop Dance Workshop with Carlyn	\$22

100% of funds raised for CFA and Brigades
Donation Fund & Far East Gippsland Wildlife
Shelters

Tickets: search for **Eventbrite Yoga Reiki
Dance Bushfire Recovery Fundraiser**. More
information also on our  events page



THE KIDS' BOOKSHOP



Top Tips for Developing Readers

A professional development event for
parents, teachers and librarians

Find out how you can nurture and develop a love
of books, reading and storytelling in pre-school
and primary school-aged children.

With special guests, literacy expert, Sarah-Mayor-Cox
and best-selling authors
Felice Arena and Jen Storer.
at The Taproom
18 February 2020
6 30pm for a 7 00pm start
All details at www.thekidsbookshop.com.au

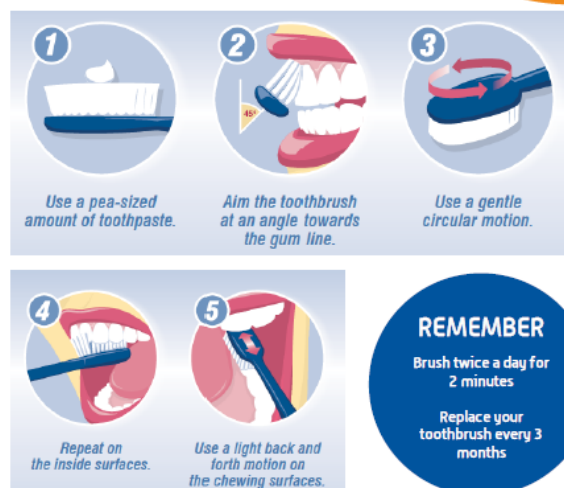


BENDIGO HEALTH DENTAL SERVICES

Would you like
a check-up?

Call us on 5454 7994
from 8.15am
Monday to Friday

HOW TO BRUSH YOUR TEETH



Book your appointment today – free for all children 0 to 12 years and no waiting list!

Level 7 East Wing, 100 Barnard Street, Anne Caudle Campus
Phone: 5454 7994
Open: Monday to Friday 8.15am to 4.45pm
Register online: www.bendigohealth.org.au/dentalservices





Castlemaine Swimming Club

We are an inclusive community-based club. We provide a safe and fun space for people to engage, develop and grow as swimmers and become healthy and resilient individuals.

Swimmers of all ages welcome. Come along and join us for fun, fitness or to improve your technique. Competing is not compulsory.

SPECIAL OFFER

We are promoting the upcoming 2019/20 season with a special offer. All new members will have club/coaching fees waived and receive a club swimming cap upon registration.
That's a saving of over \$70 per person.

Attendance every night is not compulsory

Most swimmers attend 2 or 3 nights

First 2 sessions FREE

Suitable for adults and children

Great way to train for a triathlon, general wellbeing or to improve your fitness

Castlemaine Swimming Club Fee:

Member FREE

Swimming Victoria Fee:

Insurance & Membership Package \$110-130 (approx.)

Summer Training

Castlemaine Outdoor Pool

Monday – Wednesday 6 – 7pm

Thursday 6 – 8pm

No training public holidays

Winter Training

Castlemaine Fitness Centre

Wednesday 6 – 7pm

No training public holidays

Further Information

www.castlemaineswimmingclub.org, or just turn up to a training session



CATHOLIC PARISH OF CASTLEMAINE

HOLY NAME OF MARY, CASTLEMAINE • ST BRIGID'S, MALDON •
ST ANNE'S, NEWSTEAD • ST LAURENCE'S, SANDON

SUNDAY 2nd February 2020 – Year A
THE PRESENTATION OF THE LORD
Presbytery: 76 Hargraves Street, CASTLEMAINE, 3450
Postal Address: PO Box 151, CASTLEMAINE, VIC, 3450

Phone: (03) 5472 1900
Email: castlemaine@cam.org.au
Web: <http://stmaryscastlemaine.com>

Parish Priest: Rev Fr. Wahid Riad

CONTACT DETAILS

PARISH PRIEST
Rev Wahid Riad PP
Phone: (03) 5472 1900
Mobile: 0419 511 064
ST MARY'S PRIMARY SCHOOL
Principal: Beonwyn Phillips
Phone: (03) 5472 2270

Parish Office Manager
Doreen Heagney
Mon: 12-4pm, Wed: 10-4pm,
Thurs: 10.30-3.30pm.
Phone: (03) 5472-1900

BAPTISMS, MARRIAGES,
PASTORAL CARE OF THE SICK
For details regarding the celebration
of these sacraments, please contact
the Parish Priest.

ST BRIGID'S HALL – Bookings for
St. Brigid's Hall are to be made
through Elaine Lacey on 0448 009 945.
ST MARY'S HALL – Bookings for
St. Mary's Hall are to be made through
the Parish Office on 5472-1900.

THE CATHOLIC PARISH
OF CASTLEMAINE IS COMMITTED
TO THE SAFETY, WELLBEING AND
DIGNITY OF ALL CHILDREN AND
VULNERABLE ADULTS.

AUSTRALIAN CATHOLIC
The Summer 2019/20 Issue
is now available:
"The Mystery of God"
Please take home your
FREE copy today.

WORSHIP TIMETABLE

Saturday
Reconciliation Castlemaine 5.15pm
Yigil Mass: Castlemaine 6.00pm
Sunday
Reconciliation: Maldon 8.15am
Maldon 8.30am
Castlemaine 10.30am
Tuesday
Castlemaine 6.00pm
Wednesday
Castlemaine 9.15am
Thursday
Maldon 6.00pm
Friday
Castlemaine 9.15am
Followed by Adoration
Second Sunday of the Month
Newstead 6.00pm
Fourth Sunday of the Month
Sandon 6.00pm

STEWARDSHIP CORNER

"...they took him up to Jerusalem to
present him to the Lord..."
- Luke 2:22

How seriously do you take
being a Catholic?

Is 'being Catholic' something

I just do when I attend

Sunday Mass or attend

one of my parish functions?

It's easy to be Catholic then,

it's harder to be Catholic

when I am out in the world.

Would someone recognize you as a

Catholic by the way you act, dress

and talk? How do you present

yourself to the Lord and to others?

Today's readings:

Malachi 3: 1-4
Hebrews 2: 14-18
Luke 2: 22-40

Next Sunday readings:

Isaiah 58: 7-10
1 Corinthians 2: 1-5
Matthew 5: 13-16

Responsorial Psalm

Who is the king of glory?
It is the Lord!

Gospel Acclamation

Alleluia, alleluia!

This is the light of revelation
to the nations, and the glory
of your people, Israel.
Alleluia!



Plenary Council Prayer

*Come, Holy Spirit of Pentecost.
Come, Holy Spirit of the great South Land.
O God, bless and unite all your people in
Australia and guide us on the pilgrim
way of the Plenary Council.
Give us the grace to see your face in one
another and to recognize Jesus,
our companion on the road.
Give us the courage to tell our stories
and to speak boldly of your truth.
Give us ears to listen humbly to each other
and a discerning heart to hear what you are
saying. Lead your Church into a
hope-filled future, that we may
live the joy of the Gospel.
Through Jesus Christ our Lord, bread for the
journey from age to age. AMEN.
Our Lady Help of Christians, pray for us.
St. Mary McKillop, pray for us.*

MAY THEY REST IN PEACE

Recent Deaths: John Sullivan, Susan Gibson, Peter Ryan.

Anniversaries: Michael Hayes.

Please pray also for all those who are sick and suffering serious illness and their families and loved ones who care for them. If you would like prayers for the sick included in Masses please give the names to the office or Fr Wahid.

STEWARDSHIP

Thank you and every blessing for your contributions last weekend

1st Collection –Presbytery:	\$813
2nd Collection – Parish:	\$872
Direct Debit & Credit cards:	\$160
Weekly Target:	\$2000

FEASTS DAYS OF THE WEEK

St Blaise & St Ansgar:
Monday 3rd February

St Agatha:
Wednesday 5th February

St Paul Miki & Companions:
Thursday 6th February

St Jerome Emiliani, &
St Josephine Bakhita:
Saturday 8th February

FREE BBQ

At Vinnies Assistance Centre,
Barker street, Castlemaine.
Friday 7th February @ 12.30pm.
ALL WELCOME !!

GARANBANDAL MEETING

Monday 3rd February 2020 @ 7.30pm
19A Duke street, Castlemaine.
Enquiries: Trish Bowles
on 0419-873-693.

STRENGTH IN WEAKNESS

Conference 2020 MELBOURNE

"That is why, for Christ's sake, I delight in weaknesses, in insults, in hardships, in persecutions, in difficulties."

For when I am weak, then I am strong" -
-2 Corinthians 12:10

Join us for a day of Prayer and Renewal for all Christians to come together and be strengthened and encouraged in their faith. Encouraged by Pope Francis' message that we are all called to be saints, the underlying theme of the conference is to rely solely on God's grace and strength – especially in times when your faith could be questioned and challenged.

Guest speakers, including
Archbishop Peter A Comensoli,
Healing Adoration/ Holy Mass.

When: Saturday 15th February 2020

Time: 9am to 6.30pm. **FREE ENTRY!!**

Registration at:

www.strengthinweakness.com.au

For more details please contact:

info@strengthinweakness.com.au or
0411-468-571.

HEALING MASS

Divine Australia

"Did I not tell you if you believe, you will see the Glory of God."

(John 11:40)

You are invited to a
special Healing Mass

on Tuesday 4th February at 7.00pm
at St Mary's Church, Castlemaine.

Visiting Priests, *Fr Augustine Vallooran*
from Divine Retreat Centre, Kerala,
India, and *Fr Jose Kannampally* from
Divine Retreat Centre, Vizag, India,
will be conducting this
Healing Mass.

All welcome!

PARISH CALENDAR

THIS WEEK

• Tuesday 4th February

4.30pm: Legion of Mary, Buckley Rm
7.00pm: Healing Mass, St Mary's

• Wednesday 5th February

9.15am: Mass & Rosary, St Mary's
11.00am: Mass – Thompson House

• Thursday 6th February

6.00pm: Mass, St Brigid's

• Friday 7th February

9.15am: Mass of Anointing of the Sick,
St Mary's

Masses of Anointing of the Sick

Very powerful Sacraments of Healing –
physical, spiritual, mental Healing.
ALL WELCOME.

St. Brigid's: Sunday 2nd February
at 8:30a.m. Mass

St. Mary's: Friday 7th February
at 9:15a.m. Mass

Prayer for Castlemaine

district School communities

You are invited to attend a Prayer
Evening for all our school communities
in Castlemaine and district on

Tuesday February 4th at 7.30pm
at the Church of Christ, 66 Blakeley Rd,
Castlemaine. All welcome.

MASS AT THOMPSON HOUSE

Our next Mass will be on

Wednesday 5th February @ 11a.m.

This monthly Mass is offered for all the
people in Castlemaine Health –
patients at the Hospital and all the
Houses around, Doctors, Nurses and
Staff are very welcome.

LITURGICAL MINISTERS

9th February 2020

FIFTH SUNDAY IN

ORDINARY TIME

6.00pm

Reader: David Brennand

Ext Min Com: Mercy Rixon

Marie McCallum

Tricia Barrett

8.30am

Reader: Beth Price

Ext Min Com: Elaine Lacey

10.30am

Reader: Victor Steiner

Ext Min Com: Betty Morris

Trish Bowles

Bernadette Mayne

LINEN ROSTER

FEBRUARY: Mary Bishop

A Journey of Faith

with Fr Wahid Riad

A pilgrimage of a lifetime to the
Holy Land from

11 May – 24 May 2020,

\$5735 p/person all inclusive,
with optional

Israel extension May 23-26,

Egypt extension May 26-30

(prices on request). **ALL WELCOME.**

Please call Shereen on

9547-7598 or 0421-114-724,

or Alan on 9792-4444.

THANK-YOU

For your generous
donation to the

St.Vincent de Paul Bushfire

Appeal. We raised: \$1948.